

Oct 22, 2020 Evening
Credit: Jeff Stahla



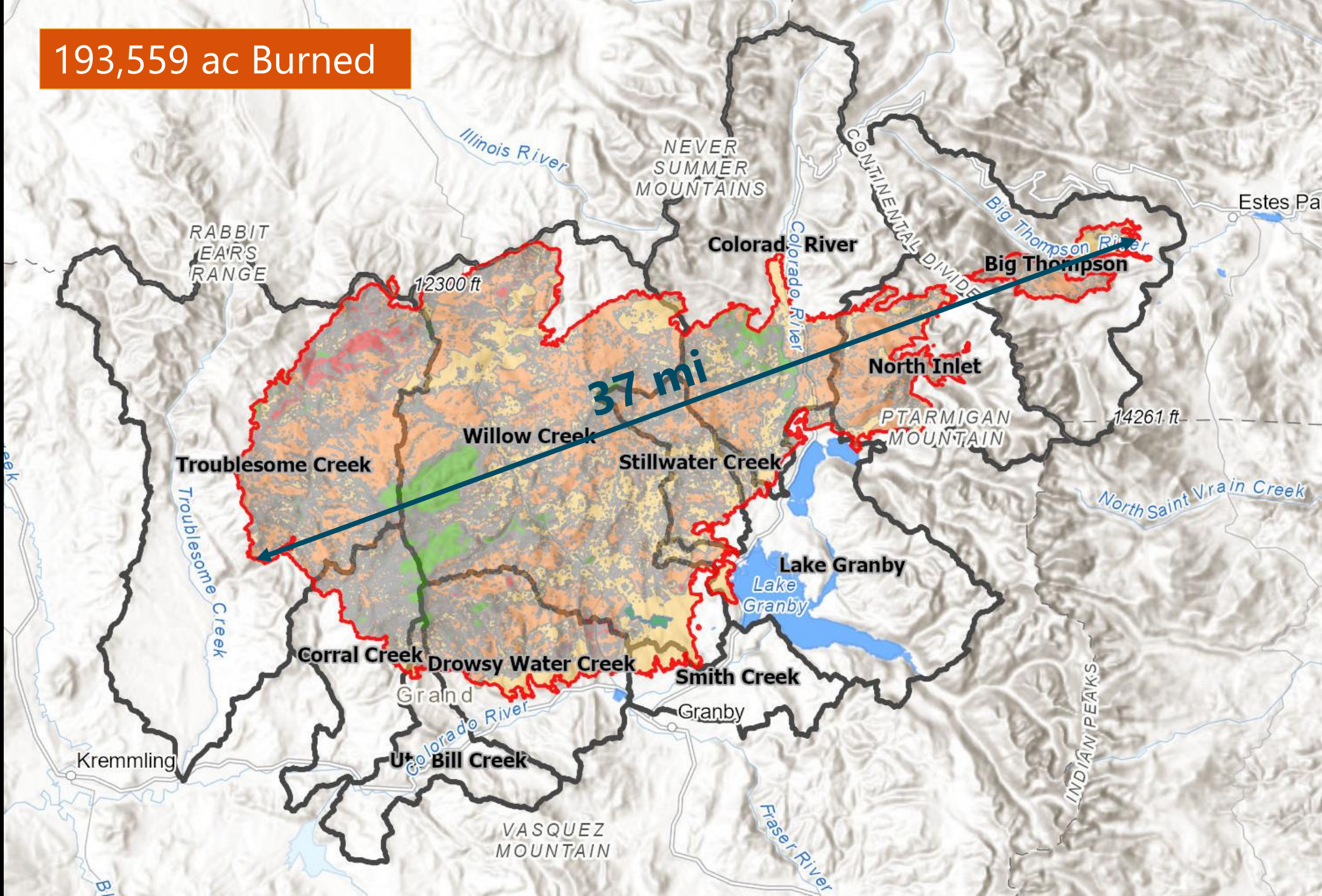
**Kawuneeche Valley
(East Troublesome Fire)**



193,559 ac Burned

Soil Burn Severity

- High
- Moderate
- Low
- Unburned/Very Low
- Burn Area





Self-Service Stations



Seeding & Mulching



Debris Booms









Northern Integrated Supply Project (NISIP) Update

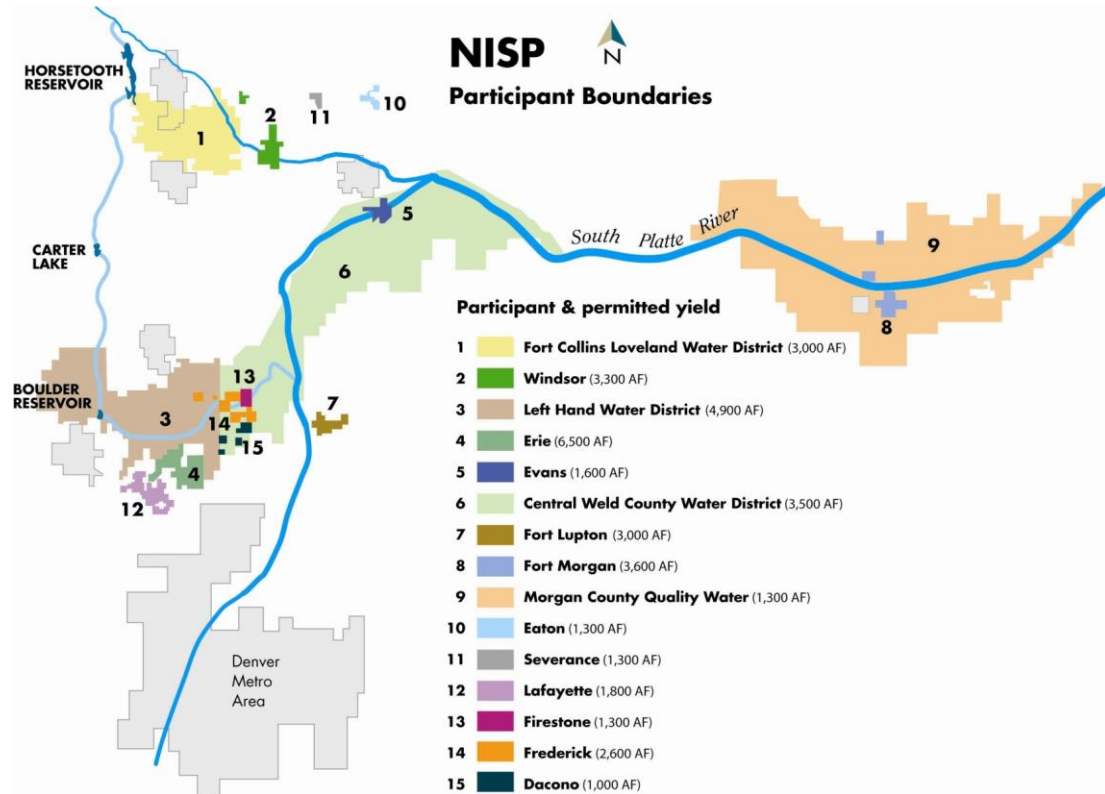
Carl Brouwer
Project Management
Department Manager



Why NISP?

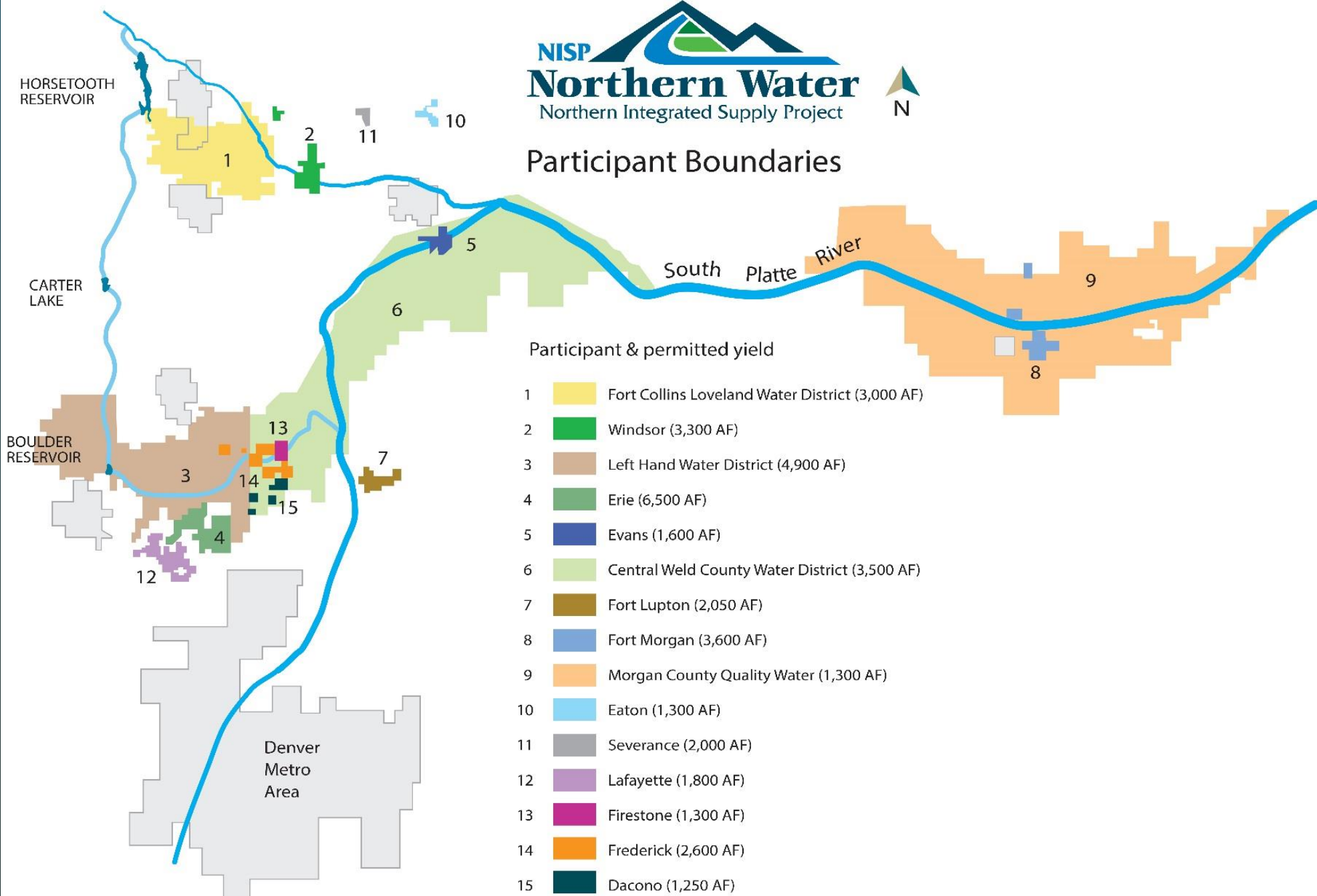
Final Environmental Impact Statement Purpose & Need

To provide the Project Participants with approximately 40,000 acre-feet of new reliable municipal water supply annually through a regional project coordinated by the District, which will meet a portion of the Participants' current and reasonably projected future additional water supply needs.




















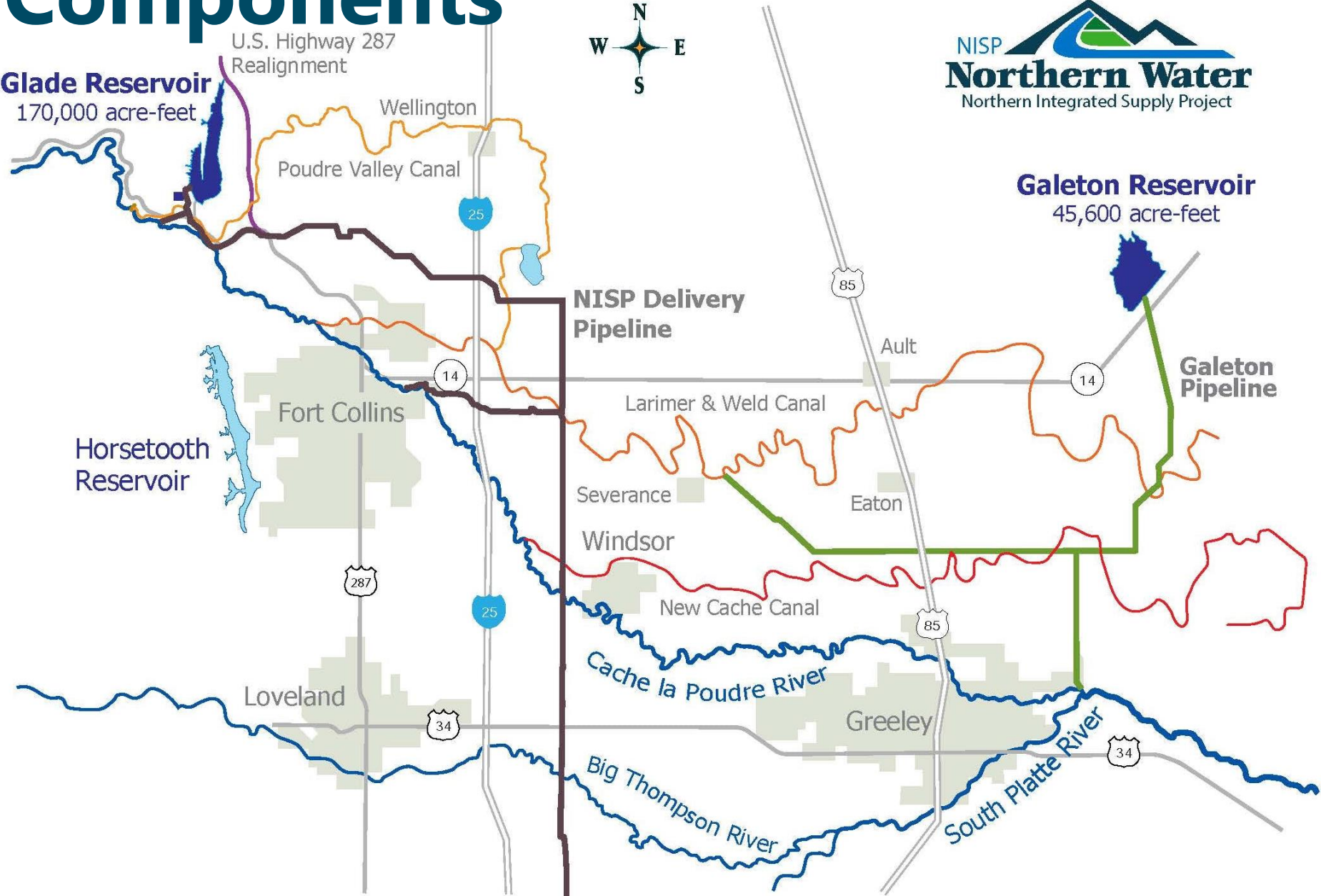
Participant Boundaries

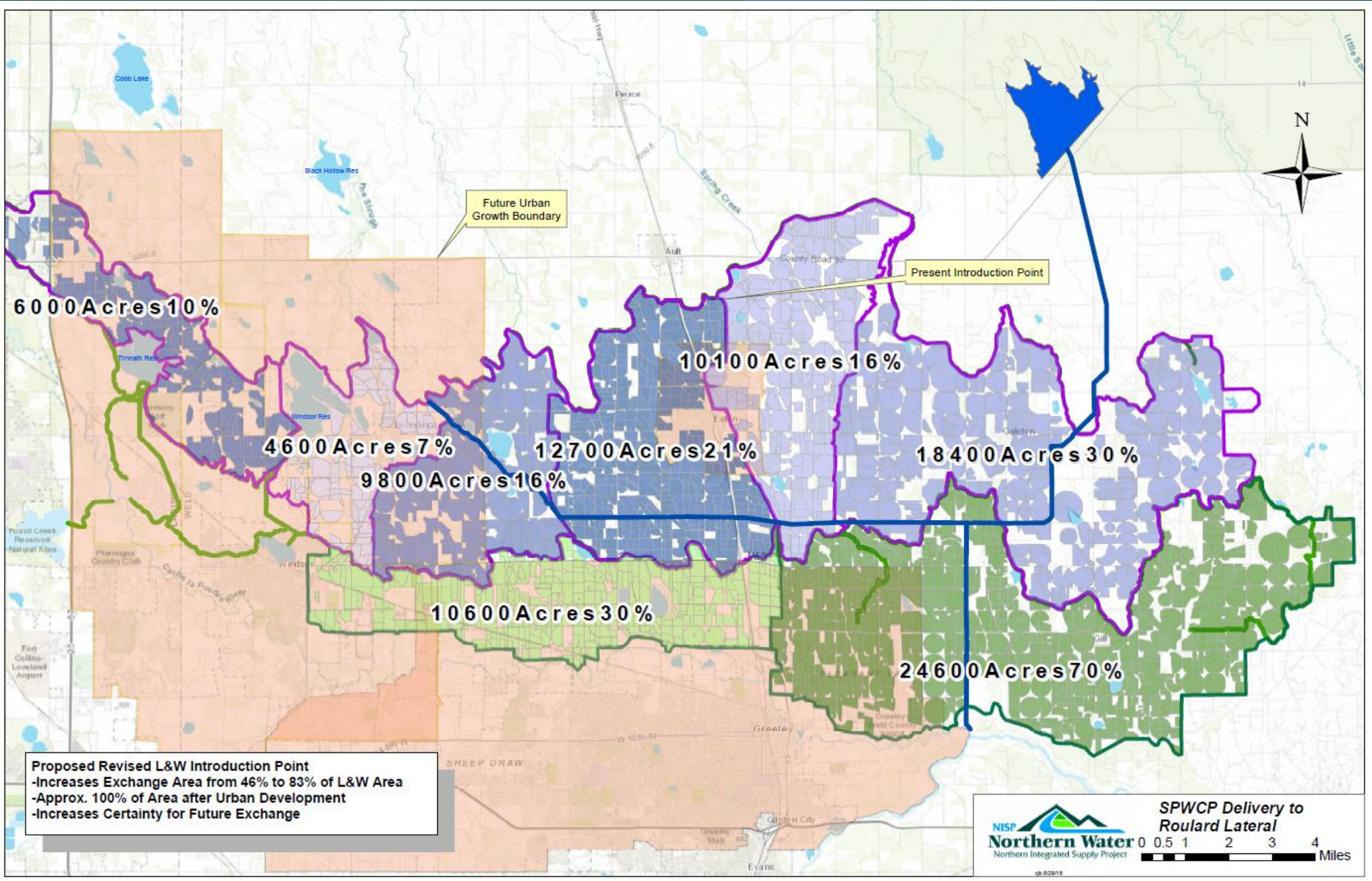


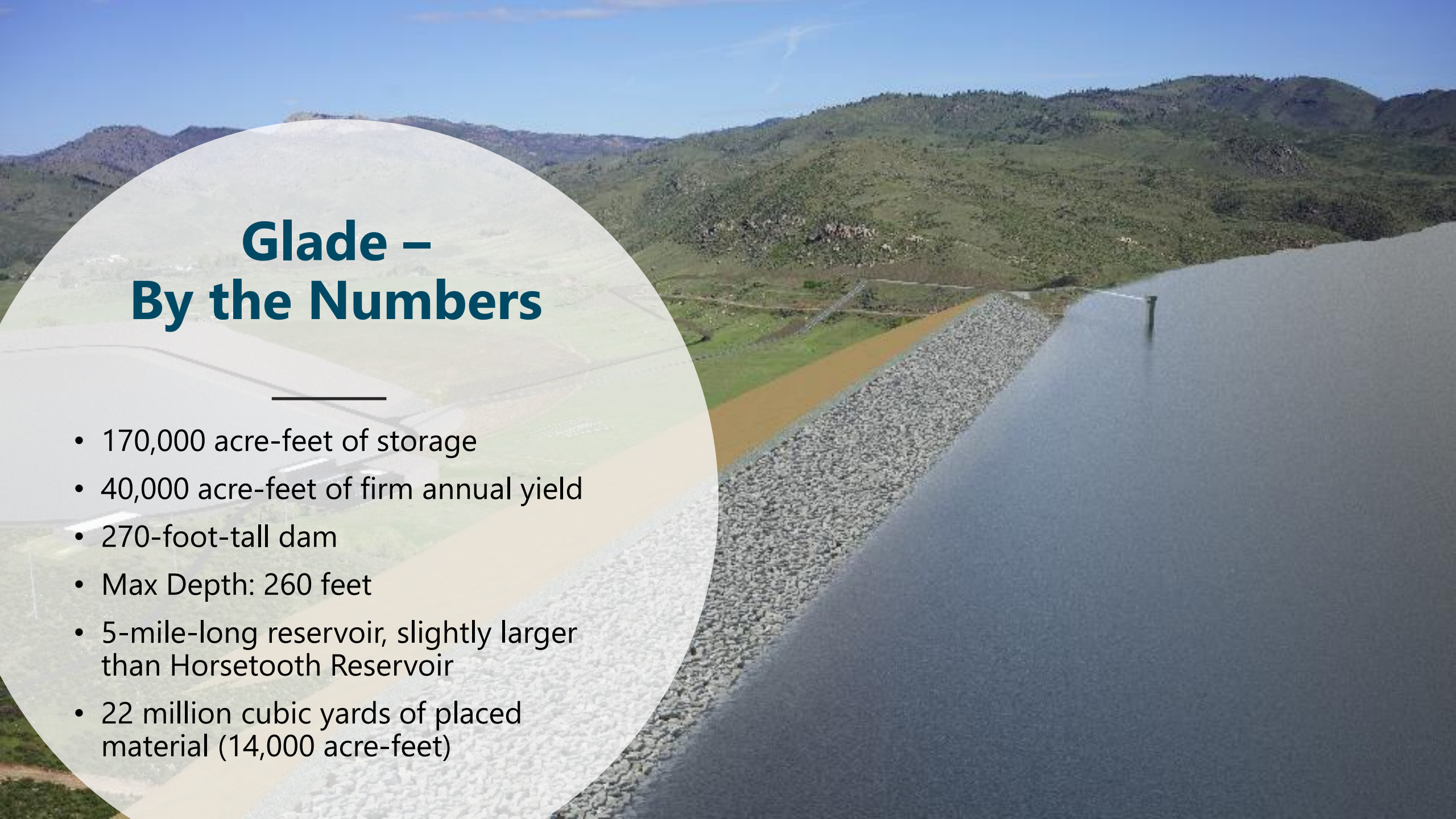
Participant & permitted yield

- 1  Fort Collins Loveland Water District (3,000 AF)
- 2  Windsor (3,300 AF)
- 3  Left Hand Water District (4,900 AF)
- 4  Erie (6,500 AF)
- 5  Evans (1,600 AF)
- 6  Central Weld County Water District (3,500 AF)
- 7  Fort Lupton (2,050 AF)
- 8  Fort Morgan (3,600 AF)
- 9  Morgan County Quality Water (1,300 AF)
- 10  Eaton (1,300 AF)
- 11  Severance (2,000 AF)
- 12  Lafayette (1,800 AF)
- 13  Firestone (1,300 AF)
- 14  Frederick (2,600 AF)
- 15  Dacono (1,250 AF)

NISP Components





A wide-angle photograph of a large reservoir with a dam. The dam is a long, low wall made of grey rocks, extending from the foreground into the distance. The water is calm and reflects the sky. In the background, there are green hills under a clear blue sky. A circular white overlay is on the left side of the image, containing text.

Glade – By the Numbers

- 170,000 acre-feet of storage
- 40,000 acre-feet of firm annual yield
- 270-foot-tall dam
- Max Depth: 260 feet
- 5-mile-long reservoir, slightly larger than Horsetooth Reservoir
- 22 million cubic yards of placed material (14,000 acre-feet)

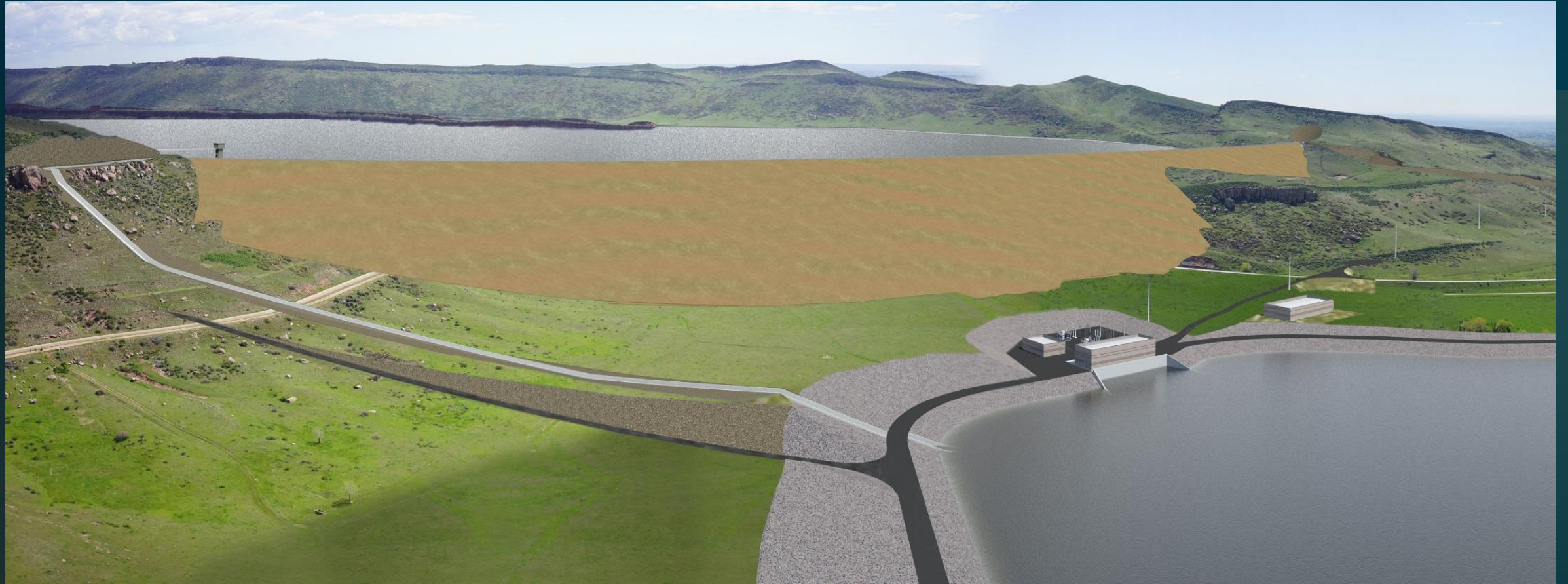
Glade Reservoir Site

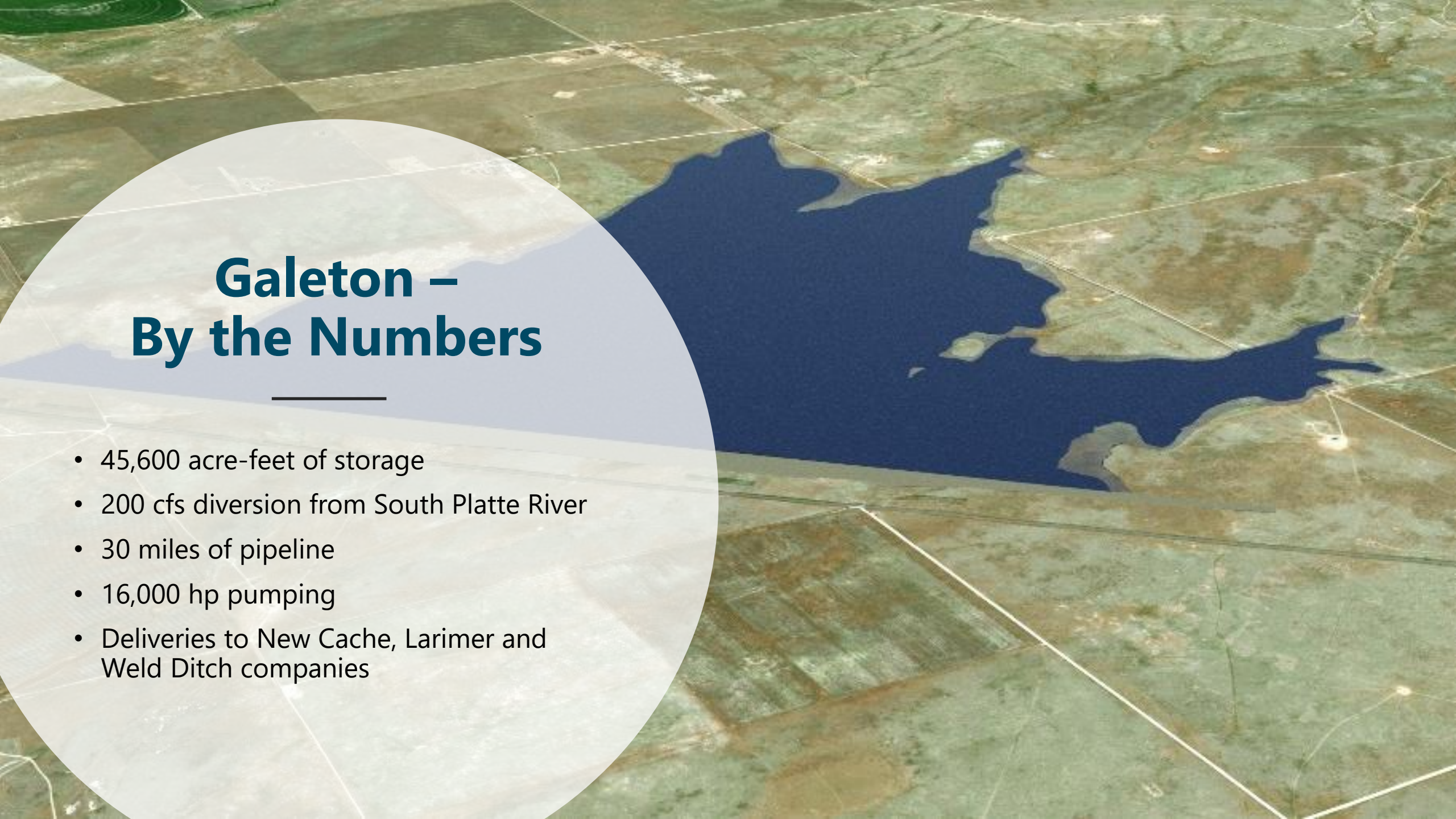
Approximate Dam Axis

HWY 14

HWY 287





An aerial photograph of a large, dark blue reservoir situated in a rural landscape. The surrounding land is divided into rectangular agricultural fields, some of which are green and others are brown. The reservoir has an irregular shape with several smaller inlets and peninsulas. A white line, possibly a road or pipeline, runs across the fields in the foreground.

Galeton – By the Numbers

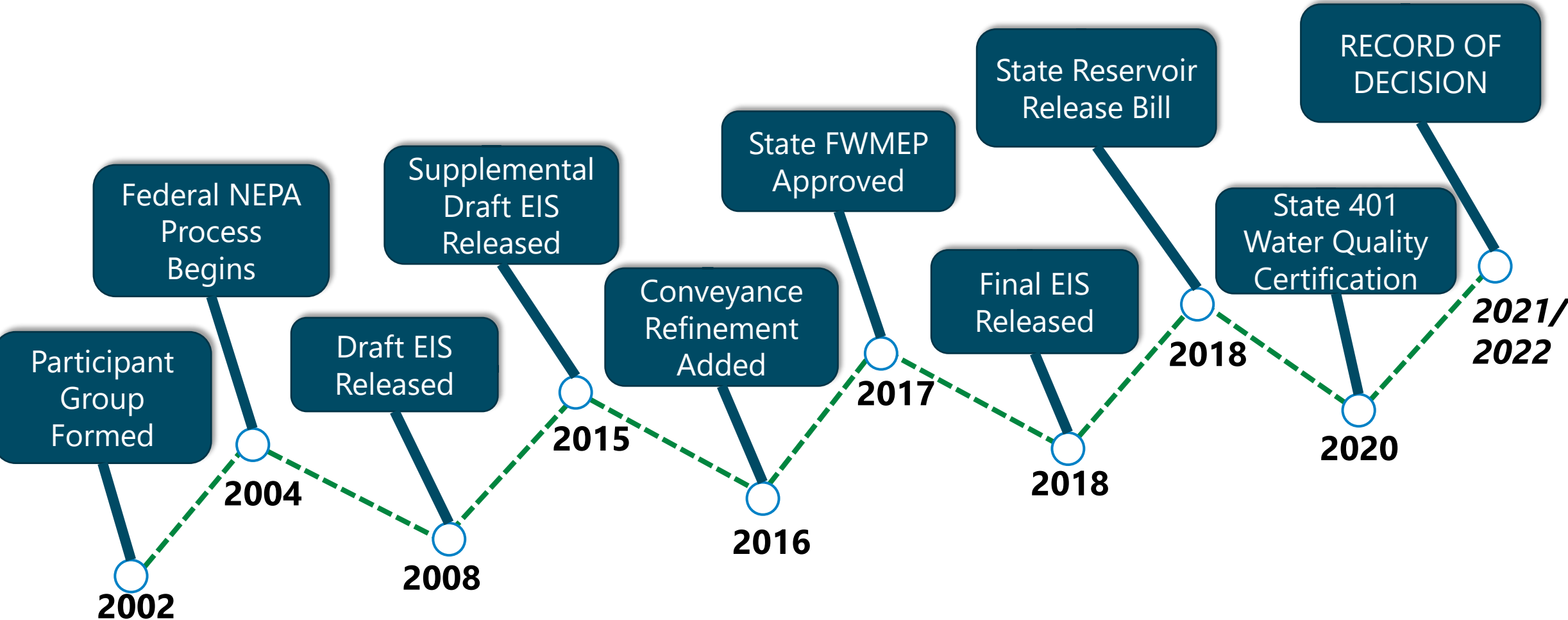
- 45,600 acre-feet of storage
- 200 cfs diversion from South Platte River
- 30 miles of pipeline
- 16,000 hp pumping
- Deliveries to New Cache, Larimer and Weld Ditch companies



Major Milestones

Permitting

Federal Record of Decision



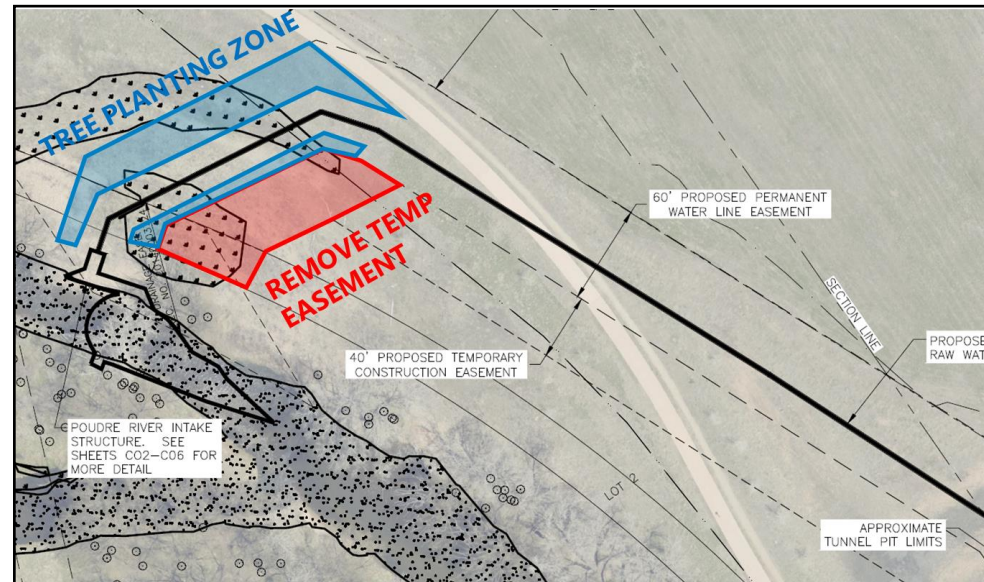
2020 – Larimer County 1041

- September 2020 – Approved by Larimer County Board of County Commissioners
- 8 Public Hearings/ Meetings
- Over 50 Permit Conditions Covering Construction, Recreation, Pipelines, and Noise
- Recreation
 - \$21 Million Commitment
 - 190 Acre Recreation Area
 - Visitor Center, Camping, Hiking, Boating, Fishing



2021 – City of Fort Collins SPAR

- June 2021 – Denial in 3-2 vote by Planning and Zoning Commission
- August 2021 – Overturned by Northern Water Board
- Conditions related to Pipeline Installation & Diversion Structure
- Additional City Coordination Ongoing





Major Milestones

Design & Construction



2019 – Watson Fish Hatchery

- Part of Fish and Wildlife Mitigation and Enhancement Plan to retrofit of existing diversion structures
- Maintain primary function of ensuring enough head to divert water
- Measurement of NISP flows
- Provide for native small-bodied fish and trout passage via fish ladders and rock ramps



2021 – Glade Construction Manager/ General Contractor

- Best Value to NISP Enterprise
- Schedule Certainty
- Early Cost Surety
- Risk Allocation & Mitigation
- Geotechnical Design
Assessment – Site Testing





Next Steps

Galeton – Water Secure

- Obtain Substitution Agreements with Irrigation Companies
- Purchase Land and ROW for Facilities
- Continue Water-Secure Program Development



Water Conveyance Work

Task	Status
Routing Analysis	Complete
Local Coordination	Ongoing
Landowner Outreach and Surveys	Ongoing
Easement Acquisition of Critical Segments	Starting after ROD
Final Design of Critical Segments	Starting after ROD
Pipeline Construction	Future



Implementation Schedule

CONTRACT DESCRIPTION	2021				2022				2023				2024				2025				2026				2027				2028				2029							
	Q1	Q2	Q3	Q4	Q1	Q2	Q3	Q4	Q1	Q2	Q3	Q4	Q1	Q2	Q3	Q4	Q1	Q2	Q3	Q4	Q1	Q2	Q3	Q4	Q1	Q2	Q3	Q4	Q1	Q2	Q3	Q4	Q1	Q2	Q3	Q4				
RECORD OF DECISION				■																																				
GLADE RESERVOIR	■	■	■	■	■	■	■	■	■	■	■	■	■	■	■	■	■	■	■	■	■	■	■	■	■	■	■	■	■	■	■	■	■	■	■	■	■	■	■	■
POUDRE VALLEY CANAL	■	■	■	■	■	■	■	■	■	■	■	■	■	■	■	■	■	■	■	■	■	■	■	■	■	■	■	■	■	■	■	■	■	■	■	■	■	■	■	■
GLADE PUMP STATION					■	■	■	■	■	■	■	■	■	■	■	■	■	■	■	■	■	■	■	■	■	■	■	■	■	■	■	■	■	■	■	■	■	■	■	■
NISP CONVEYANCE PIPELINES	■	■	■	■	■	■	■	■	■	■	■	■	■	■	■	■	■	■	■	■	■	■	■	■	■	■	■	■	■	■	■	■	■	■	■	■	■	■	■	■
GALETON PIPELINES													■	■	■	■	■	■	■	■	■	■	■	■	■	■	■	■	■	■	■	■	■	■	■	■	■	■	■	■
GALETON RESERVOIR													■	■	■	■	■	■	■	■	■	■	■	■	■	■	■	■	■	■	■	■	■	■	■	■	■	■	■	■

SCHEDULE KEY:

PRELIMINARY DESIGN

DETAILED DESIGN

PROCUREMENT

CONSTRUCTION

DATE WHEN HIGHWAY 287 IS RELOCATED





South Platte River Water Update

Bradley D. Wind, P.E.
General Manager

